

## SDCP7

### 6 Buttons & 1 Knob IP Control Panel



Buttons  
Control

PoE

TCP/IP

IR

RS232

WEB  
GUI

Volume  
Control

### Overview

The SDCP7 is a 6-button & 1 volume control knob wallplate control panel with solid brushed aluminium finish and PoE enabled.

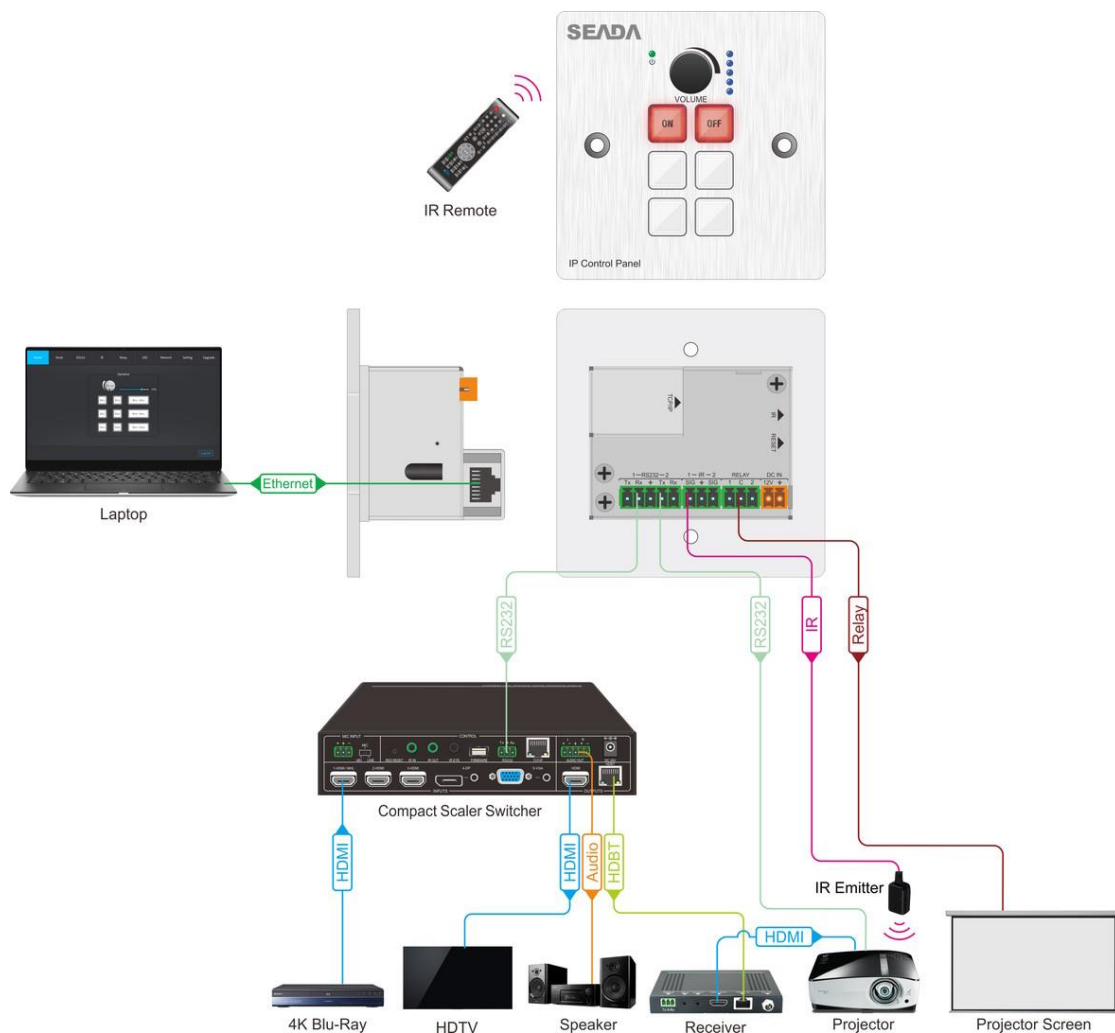
The SDCP7 wallplate control panel has 2 built-in programmable RS232 connectors, 2 Infrared (IR) connectors and 2 relay connectors for all sorts of different applications. It can be controlled & programmed vis web GUI, so no software is needed.

The programmable control panel can fully control the compatible switches, as well as third-party devices such as matrix switcher, compact scaler switcher, projectors, screens, etc and make it perfect for presentations in showrooms, classrooms, and boardrooms.

### Key Features

- Six customizable control buttons
- One volume control knob
- Support volume indication
- Support control and configuration via GUI
- Support PoE
- Support Relay controlling
- Support IR controlling
- Support RS232 controlling
- Support TCP/IP controlling

Program Port	TCP/IP
Output Port	2 x RS232, 2 x IR, 2 x Relay
Output Connector	2 x 3-Pin Pluggable terminal blocks 2 x 2-Pin Pluggable terminal blocks
Baud Rate	9600 baud, supports 9600,19200,38400,57600,115200
Power Consumption	2.5W (Max)
Input Voltage	Input: 12VDC, PoE
Net Weight	195g
Case Dimensions (W*H*D)	86mm x 86mm x 50.5mm
Warranty	2 years
Operating temperature range	0~40 degrees centigrade
Operating humidity range	10%-90% (no condensation)
Storage temperature range	-10~55 degrees centigrade
Storage humidity range	10%~90%



System Diagram