



Product Range





Creative Video Wall Controllers

- G8K
- G4K PRO
- GM9

Product Key Features:

- Built in 8K media player with 128G on board storage
- One 4K@60 HDMI capture channel
- Any degree rotation
- Custom pre-set layouts
- Unique screen messenger feature to send live messages and photos onto the video wall via cloud on smart phones
- Supports customised scrolling text
- Supports picture in picture with HDMI capture source



G4K Pro

Creative Video Wall Controller

Product Key Features:

- One 4K HDMI inputs
- Four HDMI 1.3 outputs, up to 1920 x 1200
- Any degree rotations
- Unlimited daisy chain expansion feature supports gigantic video walls
- Supports audio
- Fanless design
- Custom pre-set layouts



G4K Pro

Case Study

This video wall with 220 screens which is in an atrium plays a role of a directory for the whole store and has the effect of drawing visitors to the upper floors.

SEADA's G4K Pro fits the project perfectly due to its any degree rotation ability, daisy chain function, 4K video input and the fact that the units are completely silent with its fanless design.

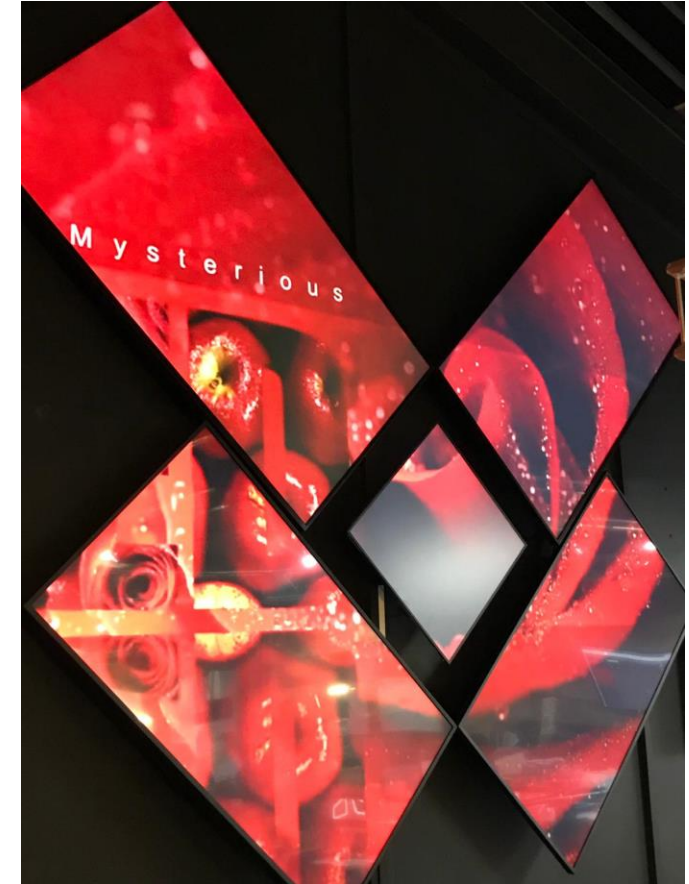


G4K Pro

Case Study

Skratchav used Seada's G4K Pro units to create this wall, comprised of 2x 55'', 2x 49'' and 1x 26.5'' LCD square shaped monitors.

This butterfly shaped video wall worked beautifully with the G4K Pro as the units allow for any degree rotation. The layout had no limits and therefore Skratch were able to create an interesting and eye-catching video wall.



Creative Video Wall Controller

Product Key Features:

- Any degree rotation on each output.
- Up to 9 HDMI outputs
- Built in 4K media player with 64GB on board memory.
- One HDMI capture channel.
- Supports picture in picture with HDMI capture source.
- Unique screen messenger feature to send live messages and images onto video wall via Cloud on smart phones.
- Supports customised scrolling text.





SolarWall Range Video Wall Controllers

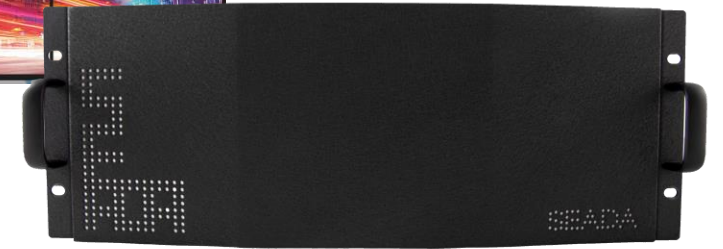
- SolarWall
- SolarWall Pro
- SWMicro

Solarwall

Video Wall Controllers

Product Key Features:

- Advanced Crossbar technology
- Robust FPGA video data process technology.
- Multi-window overlay ability
- Multi input and output formats
- 1 to 144 display outputs
- HDCP support for DVI/HDMI.
- Low power consumption.
- Multi video wall support in one system.
- Supports 4K input/output.
- Fast start up within 5 seconds.



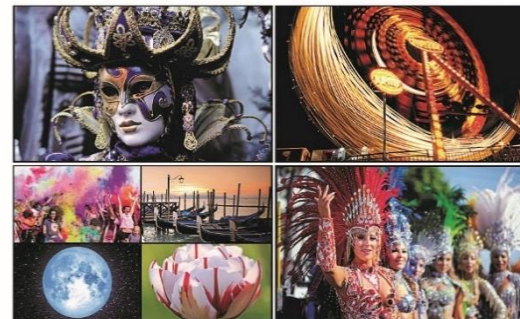
SW2000



SW4000



SW8000



Solarwall

Case Study

A video wall consisting of 49" and 55" screens was applied to a new studio in London. The biggest challenge for them was how to achieve good video quality on the video wall when the video source and video wall controller were in the utility room which was 40 meters away from the studio.

SEADA's MVWS technology enables users to control up to 4 video walls simultaneously from the same SolarWall controller, which makes the management much easier and saves cost in the chassis and capture cards since only one chassis is needed for 4 video walls and capture cards can be shared between video walls.

This technology was the perfect solution for this customer's requirement of controlling two video walls with one controller.



Solarwall Pro

Video Wall Controllers

Product Key Features:

- Advanced PCI Express technology.
- Supports 4K@60fps input and output*
- Supports digital and analog audio*
- Supports KVM*
- Supports scrolling text*
- Supports OSD on output windows*
- Supports 4K IP streaming decoding*
- Multi clients support*
- Supports over 1000 pre-set layouts*
- HDCP compliant.
- Multi video walls support in one system.

*Features exclusive to SolarWall Pro.

KVM

SW Pro supports KVM. With the addition of the "SWPRO-DC" card, users can choose if they want KVM support for their SWPro.

Mirroring

This feature is optional and enabled with the "SWPro-MP" card added in the system.



Intelligence Centre project in Indonesia

SEADA were proud to install one of our SolarWall Pro units to help control their surveillance video wall. This 5x3 video wall was installed for surveillance and monitoring, as well as the general supply for information regarding the company.

This project made use of the SolarWall Pros support of local video wall mapping. This means that they were able to connect a single monitor to the SolarWall Pro in order to then preview the whole video wall image onto that single monitor. This is made available by installing a mapping card into the SolarWall Pro.





Differences between SWPro and SolarWall

FEATURES	SWPro	SW4000 example
OSD	On Input, Output and Video Wall	Only on Input
Scrolling text	✓	✗
Inputs supported on one screen	Up to 8 including background picture	Up to 4 without the background picture
Preview	✓	Optional
Looping	Does not require connection to PC	Requires connection to PC
KVM	✓	✗
Preset Hotkey	✓	✗
Template Layouts	✓	✗
Offline Preset	✓	✗
Video Wall Support	Unlimited	Up to 4
Layouts	1000	128
Video Wall Mirroring	✓	✗
Wall Mouse	✓	✗
Layout & Loop Organization	✓	✗
Supports Audio	✓	✗
Background Picture	.jpg and .bmp	.bmp
IP streaming	4K IP Streaming (H265)	HD Only (H264)
Multiple Control Clients Support	✓	✗

SWPro

SolarWall



SWMicro & SWMicroP

Video Wall Controller

Product Key Features:

- Advanced Crossbar technology
- 8 HDMI inputs or 4 HDMI with 1 4K HDMI/DP
- Robust FPGA video data process technology
- Two or Four-window overlay mode*
- User access control
- Arbitrary positioning and overlapping of window on the video wall
- Picture-in-Picture display of two or four live, moving video input signals over any output screen*

*Output ports amount is halved when working on Four-window overlay mode.





AVoIP Video Wall Controller/ KVM

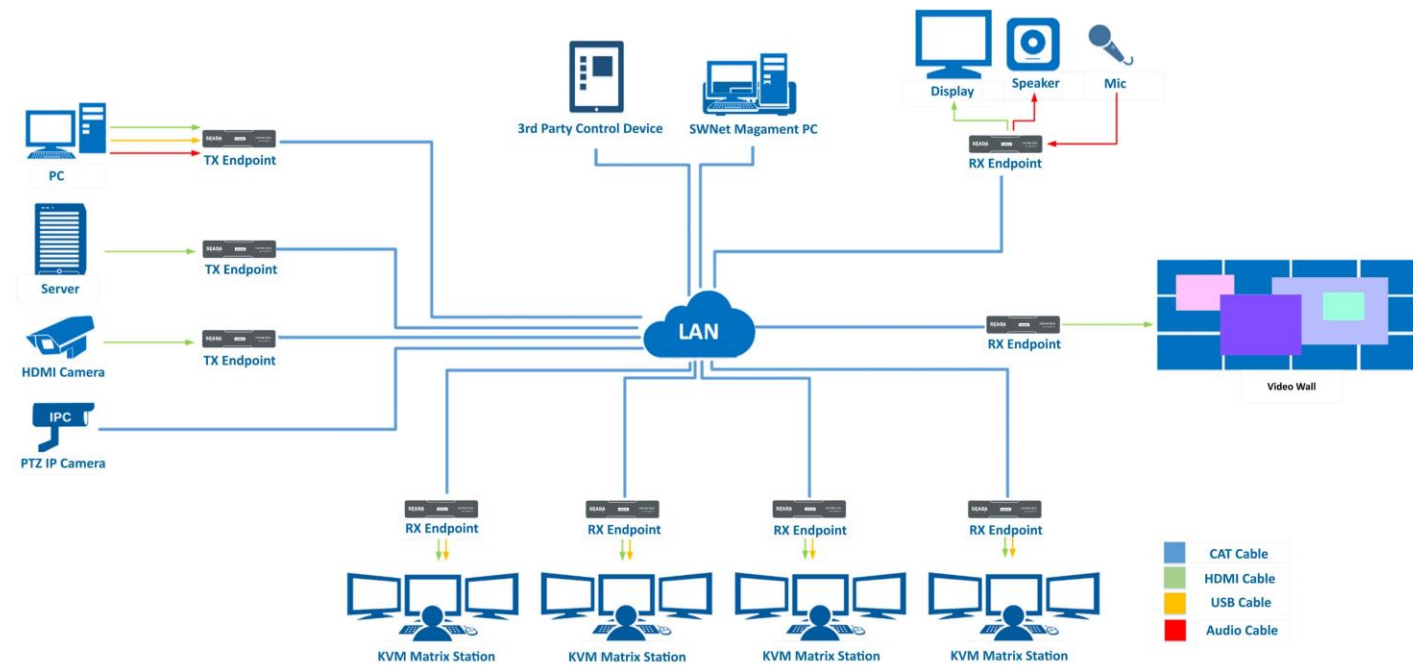
- SWNet

SWNet IoT System

AVoIP Video Wall Controller/KVM

Product Key Features:

- No server needed
- A universal solution with simple installation and administration
- Supports unlimited number of endpoints
- Compatible with standard RTSP streaming
- Supports controlling 3rd party devices
- Supports multi video walls
- Supports multi-level users
- Supports move & switch between monitors on KVM
- Supports sources preview on KVM and video wall
- Supports drag & drop on KVM and video wall
- Supports push & pull between KVM stations
- Supports KVM up to 2x4 per station
- Supports all SEADA Genesis 265 transceivers.





G SERIES Video Wall Controllers

- G24
- G44 HDMI
- G44 DVI
- G88

G24

Video Wall Controller

Product Key Features:

- Two HDMI 2.0 inputs with embedded audio.
- Four HDMI 2.0 outputs with embedded audio.
- Each input and output supports resolutions up to 4K@60Hz 4:4:4.
- Supports 180° rotation.
- Supports daisy chain.
- Custom pre-set layouts.
- Supports up and down scaling on each output.



G44 HDMI

Video wall controller

Product Key Features:

- 4 input, 4 output.
- HDMI 2.0, 4K@60 4:4:4 at inputs and outputs.
- Video wall ability.
- Seamless switching.
- Video matrix switching ability.
- Presentation switching ability.
- 4 analog audio inputs.
- 4 analog audio outputs.
- 4 digital audio outputs.
- Independent 4x4 IR Matrix.



G44 DVI

Video Wall Controller

Product Key Features:

- 4 input, 4 output.
- Video wall ability.
- Seamless switching.
- Video Matrix switching ability.
- Presentation switching ability.
- Universe input, universal output, input and output support YPbPr, VGA, CVBS, DVI, HDMI.
- Support for audio embedding, de-embedding and independent audio separation.



Video Wall Controller

Product Key Features:

- 8 inputs, 8 outputs.
- HDMI 2.0, 4K@60 4:4:4 at inputs and outputs.
- Video wall ability.
- Video Matrix switching ability.
- Presentation switching ability.
- Seamless switching.
- 8 analog audio inputs and 8 analog audio outputs.
- Independent 8x8 IR Matrix.





Edge Blending Controller

- DS2

Edge Blending Controller

Product Key Features:

- Built in 4K media player
- One HDMI capture channels
- 3 and 9 outputs models
- Custom pre-set layouts
- Fanless design
- Supports flat, curved or spherical projection surfaces
- Each output supports resolutions up to 1080p Full HD and 1920x1200
- Supports a variety of shaped open windows, such as heart-shaped, diamond, square, clouds etc.





Seamless Video Wall Matrix Switcher

- SWMP

4K Seamless Video Wall Matrix Switchers

Product Key Features:

- Advanced Crossbar technology.
- Seamless switching.
- Supports 4K@60fps (4:4:4) input and output.
- Redundant power supply.
- Supports audio.
- Supports OSD on output windows.
- Supports individual screen customised video setting.
- Supports video wall feature.
- Support up/down scaling.
- HDBaseT with PoC.





AV over IP

- Genesis 265
- Genesis Lite
- G500
- G2000

GENESIS™ 265

AV over IP

Video Wall Controller

Product Key Features:

- Fanless design, no moving parts.
- Supports video wall, multi-view and matrix switching.
- Supports PoE.
- Supports HDMI inputs or outputs.
- Supports video resolution up to 4K.
- Supports up to 16 inputs per screen.
- Supports KVM.
- Supports input signal any size, anywhere on a video wall.
- Supports both digital and analog audio

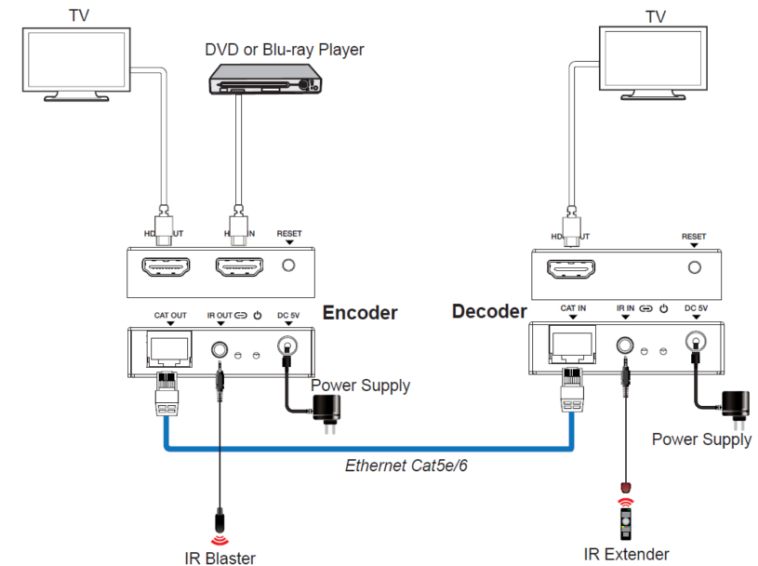


GENESIS™ Lite

HDMI over IP Extender With Loop Out (100M)

Product Key Features:

- HDMI 1.4b, HDCP 1.4 compliant.
- Supports 10.2Gbps bandwidth.
- Video resolution up to 1920 x 1200@60Hz YCbCrp 4:4:4.
- Extend distance up to 100m/328ft between encoder and decoder via Cat5e/6 cable supports standard H.265 and H.264 encoding /decoding.
- Supports 1G standard, IP switcher/router/hub.
- Supports one-way IR control.
- Compact design for easy and flexible installation.



GENESIS™ Streaming

G500

Product Key Features:

- Support encoding or decoding depending on the model
- Flexible option of models for HDMI and SDI input
- Support multiple streaming protocols, including RTMP, HTTP, HLS, SRT, RTP, ONVIF, UDP Unicast/Multicast and RTSP over UDP/TCP
- Support encoding 1 HDMI or SDI input in two stream channels with a resolution up to 1080P
- Support codec configuration for parameters such as resolution, bitrate and key interval
- Support decoding up to 4 streams and output via HDMI or SDI at a single screen, 1×2 or 2×2 multiview.



GENESIS™ Streaming & Recording

G500

Product Key Features:

- Support multiple operation modes including encoding, decoding, transcoding, video mixing and recording
- Support multiple streaming protocols, including RTMP, HTTP, HLS, SRT, RTP, ONVIF, UDP Unicast/Multicast and RTSP over UDP/TCP
- Support encoding up to 2 HDMI inputs or transcoding up to 4 streams in dual stream channels with a resolution up to 4K
- Support decoding up to 8 streams and output via HDMI with an up to a 3×3 multiview for display
- Support mixing of 4 streams and 2 HDMI inputs in a dual encoding channel with one customised layout



GENESIS™ 2000

Product Key Features:

- Support multiple operation modes including encoding, decoding, transcoding, video mixing and recording
- Support multiple streaming protocols, including RTMP, HTTP, HLS, SRT, RTP, ONVIF, UDP Unicast/Multicast and RTSP over UDP/TCP
- Support encoding up to 2 HDMI inputs or transcoding up to 4 streams in dual stream channels with a resolution up to 4K
- Support decoding up to 8 streams and output via HDMI with an up to a 3x3 multiview for display
- Support mixing of 4 streams and 2 HDMI inputs in a dual encoding channel with one customised layout

FRONT



BACK





Matrix Switchers

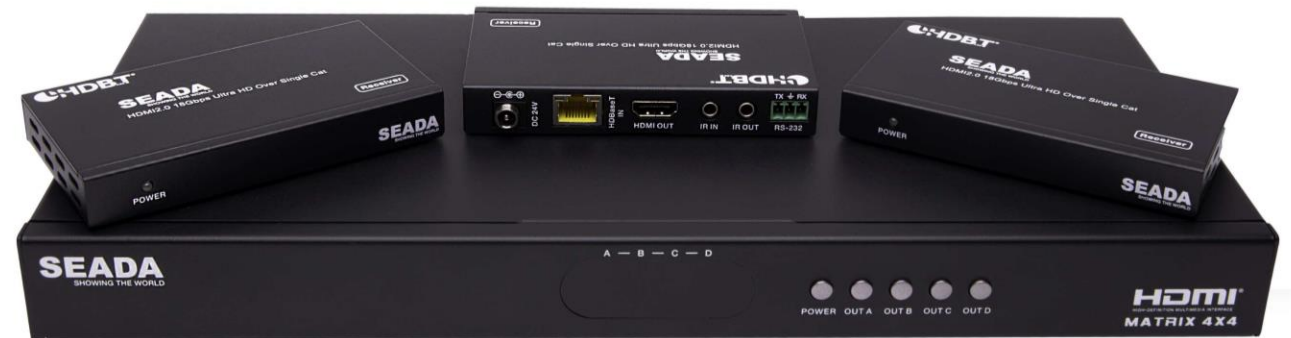
- MS-HBT44B70
- MS-HBT88B70
- MS-HDM41BA
- MS-HBTB66C70
- MS-HBT44B100
- MS-HBT88B100
- MS-HDM44
- MS-HDM88
- MS-HV51B

MS-HBT44B70 KIT

HDBaseT 4x4 Matrix Switchers

Product Key Features:

- HDMI 2.0b, HDCP 2.2 and HDCP 1.4 compliant
- Up to 4K2K@60Hz (4:4:4) on all HDMI and HDBaseT ports
- Supports pass-through audio up to 7.1 channels of High-Definition audio (LPCM, Dolby TrueHD, and DTS-HD Master Audio)
- Digital and analog de-embedding from any one of 4 outputs (configurable).



MS-HBT88B70 KIT

HDBaseT 8x8 Matrix Switchers

Product Key Features:

- HDMI 2.0b, HDCP 2.2 and HDCP 1,4 compliant
- Up to 4K2K@60Hz (4:4:4) on all HDMI and HDBaseT ports
- Supports pass-through audio up to 7.1 channels of High-Definition audio (LPCM, Dolby TrueHD, and DTS-HD Master Audio)
- Digital and analog audio extractor from any one of the outputs (configurable)
- 1U rack mounted design size



MS-HDM41BA

HDMI 4x1 Matrix Switchers

Product Key Features:

- HDMI 2.0b, HDCP 2.2 compliant
- Up to 4K2K@60Hz with 24bit RGB/YCBCR 4:4:4
- 4x1 HDMI switch with EQ and Re-clocking
- Auto and manual switching mode
- Extracts HDMI audio to digital and L/R analog output
- Audio Return Channel (ARC) supported



MS-HB66C70

6x6 18G HDBaseT Matrix Switchers

Product Key Features:

- HDMI 2.0 and HDCP 2.2 and DVI compliant
- Supports 6 HDMI inputs
- Supports 4 HDBaseT and 2 HDMI outputs
- Supports PoC on all HDBaseT ports
- Supports 4K & HD signals transmission up to 40 and 70 meters via CAT5e/6/7.
- Supports audio matrix with Volume, Mute, and Audio delay adjustment for lip-sync.



Matrix Switchers

Product Key Features:

- HDMI 2.0b, HDCP 2.2 and HDCP 1.4 compliant
- Up to 4K2K@60Hz (4:4:4) on all HDMI and HDBaseT ports.
- 8/4 HDMI inputs, 8/4 HDMI & HDBaseT mirrored outputs.
- Support 4K->1080p Down Scaler for each output port.
- Audio de-embedded is supported via analog and coax ports.
- HDR, HDR10, HDR10+, Dolby Vision, HLG are supported.

MS-HBT44B100



MS-HBT88B100

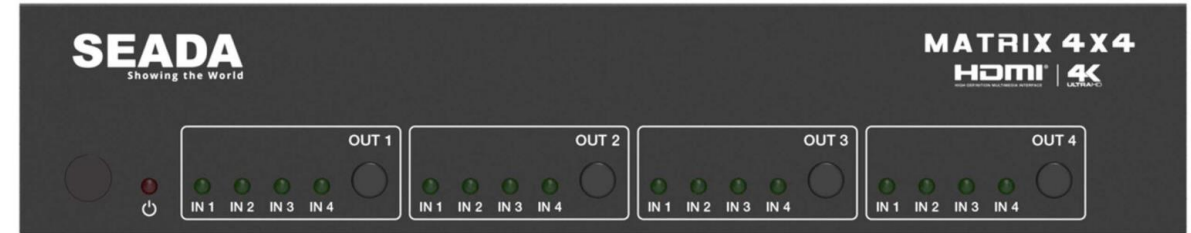


MS-HDM44

4x4 HDMI 2.0 18Gbps Matrix Switcher

Product Key Features:

- HDMI 2.0, HDCP 2.2 / HDCP 1.4 and DVI 1.0 compliant
- Four 18G HDMI 2.0 video inputs support up to 4K60 444 resolution
- Four 18G HDMI 2.0 video outputs support up to 4K60 444 resolution
- Four outputs can be individually scaled for 4K1080p
- De-embedded audio to analog L/R and Coaxial ports output

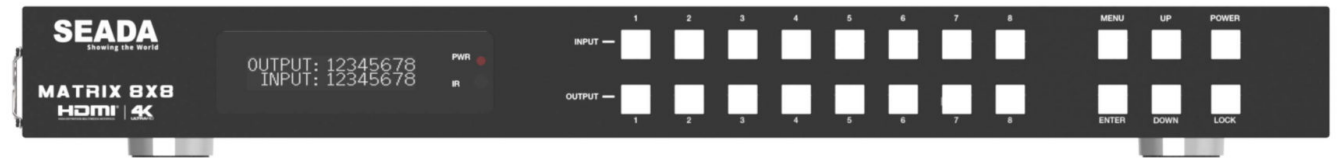


MS-HDM88

8×8 18G HDMI Matrix with ARC

Product Key Features:

- Supports HDMI2.0b
- Supports HDCP2.2/1.4
- Supports 8 HDMI inputs and 8 HDMI outputs
- Supports video resolution up to 4K2K@60Hz (YUV 4:4:4) on all HDMI ports
- Supports 18Gbps video bandwidth
- Supports Dolby Vision, HDR10+ and HLG

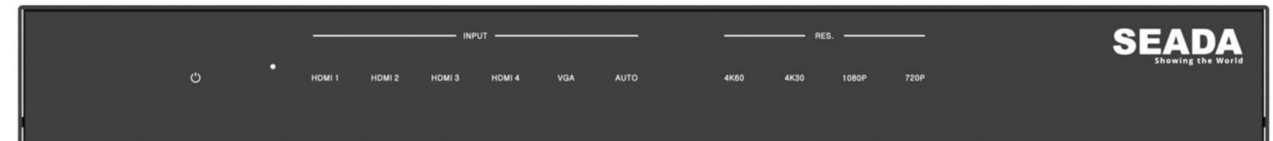


MS-HV51B

4K 5×1 Multi-format Presentation Switcher

Product Key Features:

- Compliant with HDMI 2.0/1.4b, HDCP 2.2/1.4
- Support multi inputs: 4×HDMI, 1×VGA(YPbPr, CVBS)
- Support HDMI input resolutions up to 4K UHD 4:4:4@50/60
- Support output resolutions up to 4K UHD 4:4:4 @60
- Support two input switching modes: auto or manual
- Support EDID management
- Support pass-through of PCM 2CH
- Device could be controlled via panel button, IR remote and RS-232
- Support USB online software upgrading





Multiviewers

- SD-MV-0401P
- SD-MV-0901
- SD-MV-0501P
- SD-MV-CM41
- SD-MV-CM61

SD-MV-0401P

4K60 4×1 Multi-Viewer

Seamless UHD Video Switcher

Product Key Features:

- HDMI 2.0b, HDCP 2.2, and HDCP 1x compliant
- Support 18Gbps video bandwidth
- Input and output resolutions support up to 4K@60Hz
- Seamless switching between input channels and combined multiple images on single UHD monitor
- Support up to 8 display modes
- Seamless switching on single screen display mode



SD-MV-0901

Multiviewers

Product Key Features:

- HDMI 1.4b, HDCP 1.4 compliant
- Input video resolution up to 1080p@60Hz, Output up to 4K2K@30Hz
- 9x HDMI inputs, 1x HDMI and 1x de-embedded analog audio output
- Fast seamless switching with scaling up to 3849x2160p(4K)
- Display 4x full HD signals within one 4K display with pixel-to-pixel quality.



SD-MV-0501P

5x1 Multiviewers

Product Key Features:

- Seamless switching on single display window mode
- Support 5 Multiview display modes
- Support both HDMI and HDBaseT outputs
- Support HDMI 2.0, DP 1.2 & USB C inputs
- Support up and down scaling at output with multiple resolution options
- Support output resolution up to 4096x2160P@60Hz



SD-MV-CM41

Multiviewers

Product Key Features:

- 4 HDMI inputs, 1 HDMI output
- Up to 4 customized layouts
- Supports 4K@30Hz 4:4:4, HDCP 2.2
- Seamless switch between 4 input ports
- Supports audio embedding and mixing
- Supports audio de-embedding
- 16 pre-defined layouts for multi-view
- Auto-switching at single window

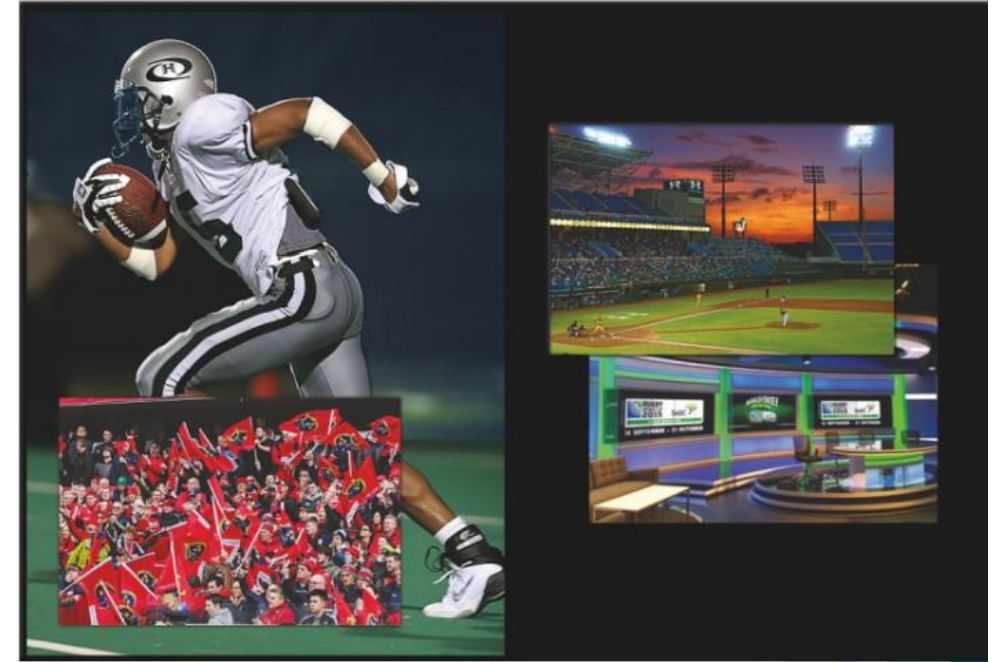


SD-MV-CM61

Multiviewers

Product Key Features:

- 4 HDMI 2.0 inputs, 2 DP 1.2 inputs
- 1 HDMI 2.0 output
- Supports 4K@60Hz 4:4:4
- Supports up/down scaling
- Supports 6 embedded audio inputs
- Supports 6 analog audio inputs
- Supports audio embedding and audio de-embedding
- Supports up to 16 pre-defined layouts
- Supports 16 custom layouts





Presentation Switchers

- SD-PS-M461
- TapPlay™ Wireless

SD-PS-M461

4k Presentation Switcher with Multi-View

Product Key Features:

- 4K 6x1 presentation switcher with multiview ability
- 1 x HDBaseT and 1 mirrored HDMI outputs
- Supports seamless switching
- Supports video source auto or manual switching
- Supports different format inputs
- 4 x HDMI, 1 x DP, 1 x USB-C
- Supports up to 4K and HDCP 2.2 compliant
- Supports up to 40m and 70m transmission distance on 4K and HD signal respectively over HDBaseT output.



TapPlay™ Wireless

Product Key Features:

- Full wireless presentation and BYOD support
- Support wireless input up to 1080P@60Hz, and HDMI 2.0 output up to 4K@60Hz
- Support Windows/Android application and PnP HDMI/Type-C dongles for wireless connection
- Support wireless mirroring like Miracast
- Support mouse and keyboard control
- Support wireless touch back for PC/Android
- Fully compatible with VC platforms
- Support multiview up to 2, 4 or 9 windows
- File sharing via app (P900)
- Output rotation (P900)
- Wireless pairing (P900)



TapPlay™ Wireless

HDMI and Type-C Dongles

Product Key Features:

- Support wireless transmission from PC/Mac to base unit
- Support quick switch of the PC signal for less than 1s by tapping
- Dual color LED, indicating active source signal and power/link
- Support USB peripherals such as camera, mic, and speaker over Wi-Fi sharing

TP-DGC



TP-DGH



TP-PDH



TP-PDC





Conference Solutions

- Retractable and Foldable Monitors
- Connectivity Boxes
- Cameras
- Control Keyboards

SC13W

Portable Meeting Room System

This All-in-One system features a 13.3" motorized monitor, PC, speaker, microphone, stylish clock and an 8.8" ID TFT built in panel. It can be a perfect solution for schools, receptions and small to large meeting room applications.

Product Key Features:

- Ergonomic design
- Adjustable Viewer Angle
- HDCP compliance
- Front name plate
- Secure
- Build in grid array microphone
- Microphone control button



G SERIES

Retractable Monitor

The G Series motorized retractable monitors and microphones benefits the most traditional assembly/chamber set up. Furthermore, it can be an excellent tool in the meeting/ conference rooms.

Product Key Features:

- Motorised retractable monitor
- 0~90 adjustable monitor angle
- Touch screen
- Built in motorized retractable microphone
- Ergonomic design
- Integrated PC power switcher
- Stylish design
- RS485 & remote control
- Low power consumption



SC13FM

Motorized & Retractable Monitor

SC13FM offers compact and ergonomic design with an adjustable screen viewing angle and large leg room for different users.

Product Key Features:

- Motorised retractable monitor
- Fine powder coated surface finish
- Optimised viewing angle
- Integrated PC power switcher
- Stylish design
- HDCP compliance
- Integrated input video sources switcher
- Illuminated capacitive touch buttons
- Compatible with SEADA Multimedia Conference Platform.



M Series

Motorized & Retractable Monitor

The M Series motorized retractable monitors are state of the art exquisite monitors that are made from aluminum. M series comes in three different sizes of 15", 17" and 22".

Product Key Features:

- Motorised retractable monitor
- 16 degree of automatic inclination screen
- One button control
- Ergonomic design
- Optional touch screen
- Integrated PC power switcher
- Stylish design
- RS485 & remote control
- Low power consumption



SC13FP

Motorized & Retractable Tablet

SC13FP can be used as a standalone unit in classrooms, offices, receptions etc or operate as a multi units' system with Multimedia Conference Platform to offer a paperless conference solution. When it is not in use, the tablet can be retracted into the housing beneath the desk. This makes the desk surface tidy as well as putting the tablet in a safe and secure location.

Product Key Features:

- Ergonomic design
- Adjustable Viewer Angle
- HDCP compliance
- Detachable 13" Tablet
- Secure
- Auto switching between wireless and Ethernet connection



SC17FZD

Motorized Retractable Monitor

The SC17FZD is the motorized foldable monitor designed by SEADA to offer solutions for the Conference room, Office, Hotel, School, Control centre, Institutions, Auditorium and Reception with its elegant, stylish and multi function design.

Product Key Features:

- Motorised foldable design
- 0~110° adjustable monitor angle
- Touch screen-optional
- Built in mouse and keyboard housing



SC-FZW

Motorized Foldable Monitor

The motorized foldable monitor designed by SEADA to offer the Conference room, Office, Hotel, School, Control centre, Institutions, Auditorium and Reception with its elegant, stylish and multi functional design. SC-FZW has two different sized screens: 15.6" and 17.3" as SC15FZW and SC17FZW.

Product Key Features:

- Motorised foldable monitor
- Fine powder coated surface finish
- Touch screen-optional
- Stylish design



SC15FZW & SC17FZW

SC-DA Series

Connectivity Box

Product Key Features:

- Multi connectivity ports
- Damping Lid
- Stylish and discreet design
- 1 x Wireless charger for smart phones
- 1 x USB charging port
- 1 x 4K HDMI port
- 2 x RJ45 ports
- 1 x 3.5mm audio port
- 1 x Universal power socket is compatible with all sorts of power plugs
- Sandblasted anodized aluminum top finish
- Easy to install and terminate



SC-DB Series

Connectivity Box

Product Key Features:

- Multi connectivity ports
- Pneumatic Lift Pop-up Lid
- Stylish and discreet design
- 1 x USB charging port
- 1 x 4K HDMI port
- 2 x RJ45 ports
- 1 x 3.5mm audio port
- 1 x Universal power socket is compatible with all sorts of power plugs
- Sandblasted anodized aluminum top finish
- Easy to install and terminate



SC-DC Series

Connectivity Box

Product Key Features:

- Multi connectivity ports
- Pneumatic Lift Pop-up Lid
- Stylish and discreet design
- 1 x VGA port
- 1 x 4K HDMI port
- 2 x RJ45 ports
- 1 x 3.5mm audio port
- 1 x Universal power socket is compatible with all sorts of power plugs
- Sandblasted anodized aluminum top finish
- Easy to install and terminate



SC-11D Series

Connectivity Box

Product Key Features:

- Dual universal power socket
- 1 x VGA port
- 1 x 4K HDMI port
- 2 x RJ45 ports
- 1 x 3.5mm audio port
- 1 x Universal power socket is compatible with all sorts of power plugs
- Sandblasted anodized aluminum top finish
- Easy to install and terminate



PTZ Cameras



SDC015-SHLPN

Product Key Features:

- High quality 1/ 2.8" CMOS sensor
- Fast, silent turn and pan function
- Multi output formats (USB, HDMI, SDI, LAN)
- Supports auto-focusing
- Low Noise and High SNR
- Supports H.264/H.265 video compression
- Supports multi network protocols (VISCA, PELCO-D, PELCO-P)
- Supports multiple control interfaces
- Supports remote IR control
- Quiet and smooth PTZ movement
- Supports sleep mode
- Supports up to 255 preset positions
- Supports audio input
- Supports PoE on non-USB models

SDC015-U2U3HL



SDC015-SHLP



AI Tracking PTZ Cameras

Product Key Features:

- High quality 1/2.8" CMOS sensor
- Support full HD resolution
- Leading Auto Focus Technology
- Support multi output formats (USB, HDMI, SDI, LAN)
- Multiple Audio/Video Compression Standards
- Support USB3.0 Dual Coding Stream
- Support multi network protocols (VISCA, PELCO-D, PELCO-P)
- Support multiple control interfaces
- Support various remote controls
- Quiet and smooth PTZ movement
- Support AI Human Detection
- Support audio input
- Support PoE



SDC075

SDC-AV4K

All in One Video Bar

Product Key Features:

- Built in camera, speakers and microphones
- Supports 120-degree large FOV
- Supports 4K camera resolution
- 8-megapixel high quality CMOS image sensor
- Supports auto framing
- Supports 5x zoom/ePTZ
- Built in 6 arrays of microphones
- Supports up to 6 meters pickup range
- Supports voice tracking
- Built in 2 x 7W speakers
- Supports 1x USB 3.0 with 2.0 compatibility
- Supports IR remote control



Control Keyboards

Product Key Features:

- High quality 1/ 2.8" CMOS sensor
- Fast, silent turn and pan function
- Multi output formats (USB, HDMI, SDI, LAN)
- Supports auto-focusing
- Low Noise and High SNR
- Supports H.264/H.265 video compression
- Supports multi network protocols (VISCA, PELCO-D, PELCO-P)
- Supports multiple control interfaces
- Supports remote IR control
- Quiet and smooth PTZ movement
- Supports sleep mode
- Supports up to 255 preset positions
- Supports audio input
- Supports PoE on non-USB models
- SDC-TR03 supports touchscreen
- SDC-TR03 supports on-screen real-time display
- SDC-TR03 supports layout switch



SDC-TR01



SDC-TR03



SDC-TR02

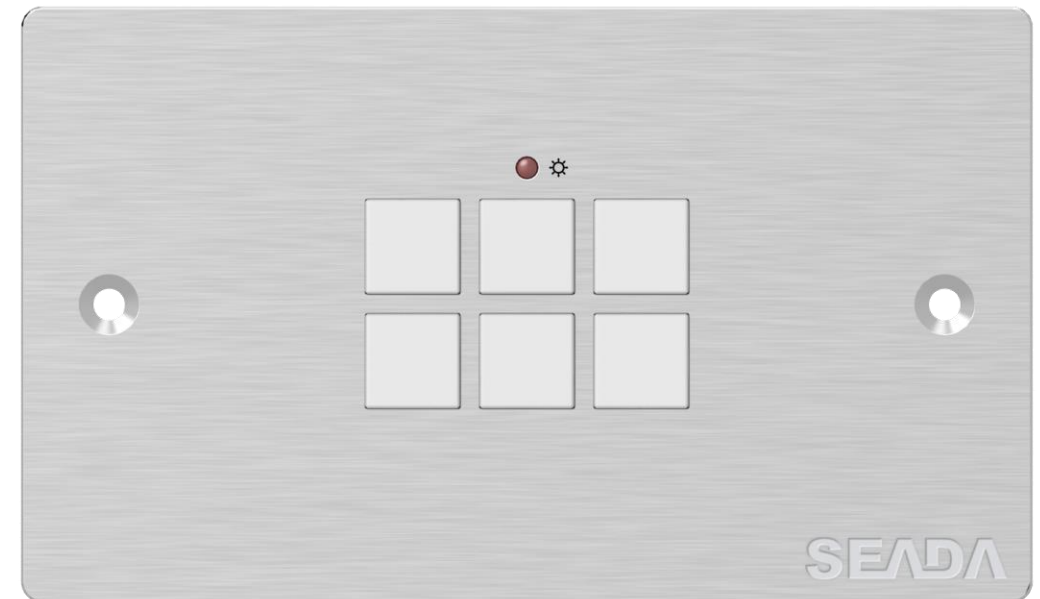


Wall Plate Panels

- Control Panels:
 - SDCP6
 - SDCP7
 - SDCP9
 - SDCP10
- HDBaseT Extenders:
 - SD-WP31C
 - SD-WP31D
 - SD-WP31V

Product Key Features:

- Each button can be programmed to send bi-directional RS232 commands simultaneously to control third party devices.
- Each button can be programmed to send the infrared codes simultaneously to control the third-party devices and support infrared code learning function.
- Each button can be programmed to send controlling commands via Ethernet to control third party devices.
- The unit may be programmed through the ETHERNET port, via the control software.
- Crystal and backlit buttons with easy user-friendly customizable changeable labels.



SDCP7

Wall Plate Control Panels

Product Key Features:

- Six customizable control buttons
- One volume control knob
- Support volume indication
- Support control and configuration via GUI
- Support PoE
- Support Relay controlling
- Support IR controlling
- Support RS232 controlling
- Support TCP/IP controlling

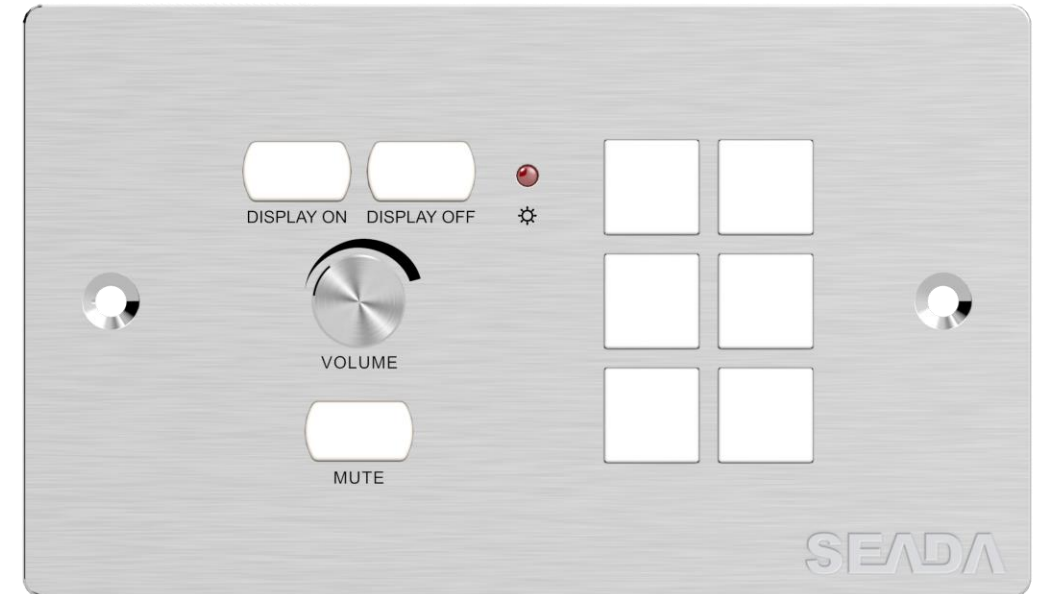


SDCP9

Wall Plate Control Panels

Product Key Features:

- Each button can be programmed to send bi-directional RS232 commands simultaneously to control third party devices.
- Each button can be programmed to send the infrared codes simultaneously to control the third-party devices and support infrared code learning function.
- Each button can be programmed to send controlling commands via Ethernet to control third party devices.
- The unit may be programmed through the ETHERNET port, via the control software.
- Crystal and backlit buttons with easy user-friendly customizable changeable labels.



SDCP10

Wall Plate Control Panels

Product Key Features:

- Each button can be programmed to TCP/IP or RS232 commands simultaneously to control third party devices.
- Each button can be programmed to send the infrared codes simultaneously to control the third-party devices and support infrared code learning function.
- The unit may be programmed through the ETHERNET port, via the web GUI.
- Crystal and backlit buttons with easy user-friendly customizable changeable labels.
- Supports the POE function or power adapter power supply.
- Dimension: 86mm long and 86mm wide.

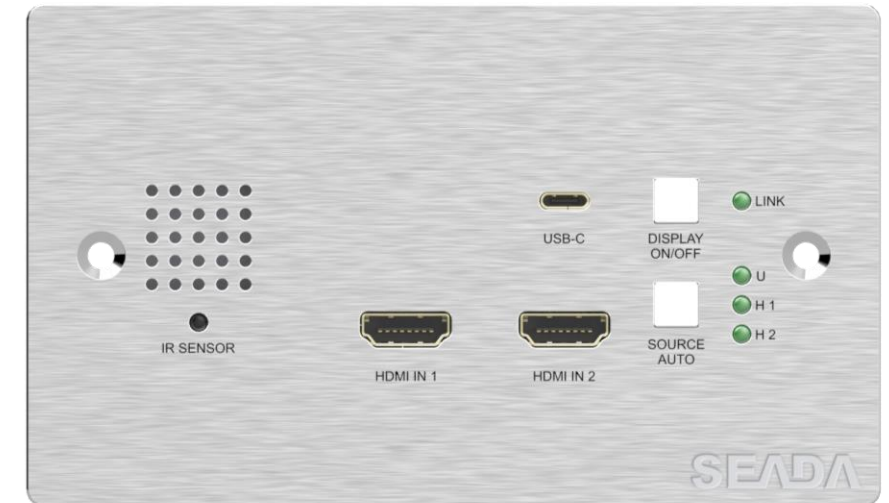


SD-WP31C

Wall Plate HDBaseT Extenders

Product Key Features:

- Supports HDMI signal up to 4K@60Hz 4:2:0, Slimport signal up to 4K@30Hz 4:4:4.
- Supports HDMI 1.4 standard and HDCP 2.2 compliant. Ensures display of content-protected media and interoperability with HDCP compliant devices.
- Active input automatic detective.
- Extending HDMI signal 4K@60Hz up to 131ft/40m and 1080p@60Hz up to 229ft/70m.
- Supports RS232 pass-through with HDBaseT connection and local control.
- Supports IR pass-through to extend IR signal to control display device.
- The DISPLAY ON/OFF button can be programmed by IR learning feature or RS232 command.



SD-WP31D

Wall Plate HDBaseT Extenders

Product Key Features:

- HDMI 1.4, HDCP 1.4 and DP 1.2 compliant
- Support resolution up to 4K2K@30Hz YCbCr 4:4:4 for HDMI / DP ports
- Support resolution up to 1920×1200@60Hz for VGA port
- Support transmission distance up to 229.6ft / 70m with 1080p60Hz and up to 131.2ft / 40m with 4K30Hz YCbCr 4:4:4 over a single Cat6/6a cable.
- Support manual and automatic switch
- Support two-way RS-232
- Medium 86mm×86mm wall box
- Support 24V POC function

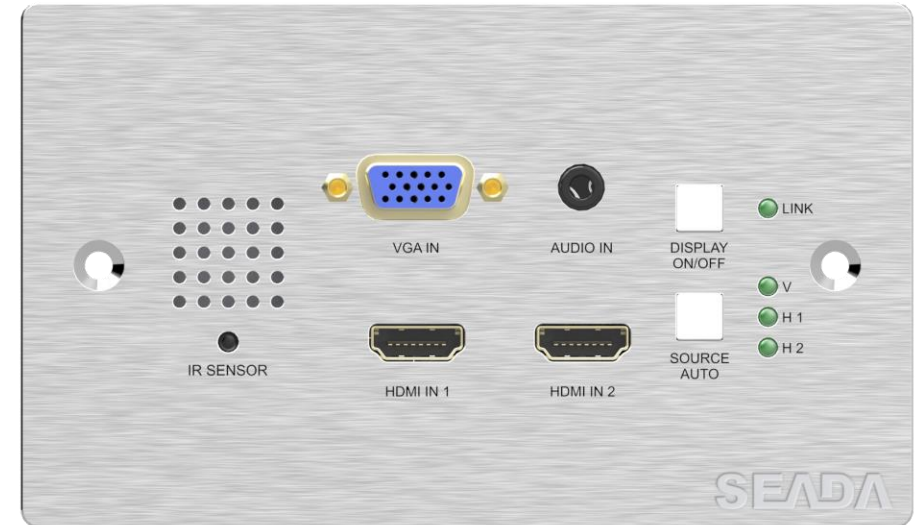


SD-WP31V

Wall Plate HDBaseT Extenders

Product Key Features:

- Supports HDMI signal up to 4K@60Hz 4:2:0, Slimport signal up to 4K@30Hz 4:4:4.
- Supports HDMI 1.4 standard and HDCP 2.2 compliant. Ensures display of content-protected media and interoperability with HDCP compliant devices.
- Active input automatic detective.
- Extending HDMI signal 4K@60Hz up to 131ft/40m and 1080p@60Hz up to 229ft/70m.
- Supports RS232 pass-through with HDBaseT connection and local control.
- Supports IR pass-through to extend IR signal to control display device.
- The DISPLAY ON/OFF button can be programmed by IR learning feature or RS232 command.





Extenders

- HDBaseT Extenders:

- HBT70S
- HBT70B
- HBT100B
- HBT150B

- Fiber Optic Extenders:

- FO-FO2P

HBT70S KIT

4K HDBaseT Extenders

Product Key Features:

- Complies with the HDBaseT specifications.
- Supports 4K UHD video up to 40m (3840 x 2160 @30Hz 4:4:4, 4096 x 2160 @24Hz 4:4:4, and 4K@50/60Hz 4:2:0).
- Supports 1080p @60Hz36bit; 3D 1080p@30Hz 36bit up to 70m.
- HDCP2.2 compliant.
- Supports all know HDMI audio formats including Dolby TrueHD, Dolby Atmos, Dolby Digital Plus and DTS-HD Master Audio transmission.
- Supports bi-directional PoC to power extenders from either transmitter or receiver end.
- 10.2 Gbps Bandwidth

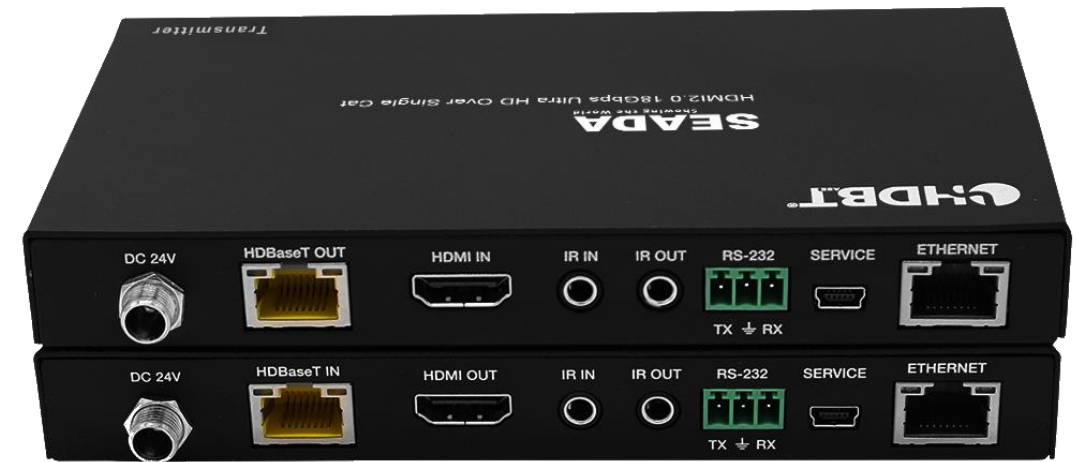


HBT70B KIT

18Gbps HDBaseT Extenders

Product Key Features:

- HDMI 2.0b (18Gbps), HDCP 2.2 and DVI compliant.
- Video resolutions up to 4K2K@50/60Hz (YUV4:4:4) at 40 meters and 1080p at 70 meters.
- 10bits HDR (High Dynamic Range) pass through.
- Supports HDMI High Bit Rate (HBR) audio pass through.
- Supports CEC bypass.
- Supports HDMI Audio Formats LPCM, Dolby and DTS.
- PoC (Power over Cable) function is supported.
- Supports bi-directional RS232 and Infrared control signal together with HDMI signal.



HBT100B KIT

18Gbps HDBaseT Extenders

Product Key Features:

- HDMI 2.0b (18Gbps), HDCP 2.2 and DVI compliant.
- Video resolutions up to 4K2K@50/60Hz (YUV4:4:4).
- Supports up to 100m transmission for 1080p
- Supports HDR and HBR audio pass through.
- Supports CEC bypass.
- Supports HDMI Audio Formats LPCM, Dolby and DTS.
- PoC (Power over Cable) function is supported.
- Supports bi-directional RS232 and Infrared control signal together with HDMI signal.

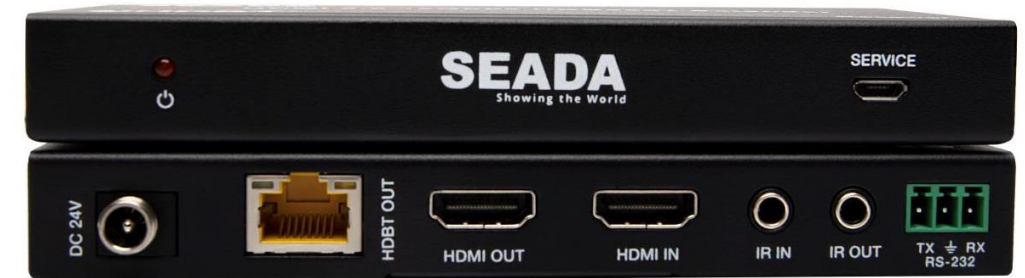


HBT150B KIT

18Gbps HDBaseT Extenders

Product Key Features:

- HDMI 2.0b (18Gbps), HDCP 2.2 and DVI compliant.
- Video resolutions up to 4K2K@50/60Hz (YUV4:4:4).
- Supports up to 150m transmission for 1080p.
- Supports up to 120m transmission for 4K2K.
- Supports HDR, HDR10+, Dolby Vision and HLG.
- Supports HDMI Audio Formats LPCM, Dolby and DTS.
- PoC (Power over Cable) function is supported.
- Supports bi-directional IR, RS-232 and CEC pass-through.



FO-FO2P

18Gbps HDMI over Optical Fiber Extenders

Product Key Features

- HDMI 2.0b (18Gbps), HDCP 2.2 and DVI1.0 compliant
- Supports 18Gbps video bandwidth
- Supports video resolution up to 4K2K@50/60Hz 4:4:4
- Supports audio formats: LPCM2/5.1/7.1 CH, Dolby Digital/Plus/EX, Dolby True HD, DTS, DTS-EX, DTS-96/24, DTS High Res, DTS-HD Master Audio, DSD
- Support Transmission distance up to 10km (over single-mode fiber cable)





Splitters

- SP-H14B
- SP-H18B
- SD-0102-4K60
- SD-0104-4K60

SP-H14B

1 in 4 out HDMI 4K Splitters

Product Key Features:

- HDMI 2.0b, HDCP 2.2 complaint.
- Supports video format up to 4K2K@60Hz with 8-bit RGB/YCBCR 4:4:4/YCBCR 4:2:2.
- Supports 3D frame sequential video format up to 4K2K@30Hz.
- Supports high resolution VESA mode video format up to QSXGA@60Hz.
- Supports LPCM 7.1CH, Dolby TrueHD, and DTS-HD Master Audio.
- Supports smart EDID control.
- Compact design for an easy and flexible installation.



SP-H18B

1 in 8 out HDMI 4k Splitters

Product Key Features:

- HDMI 2.0b, HDCP 2.2 complaint.
- Supports 18Gbps bandwidth.
- Supports resolution up to 4K@60Hz 4:4:4.
- Supports HDR function.
- Supports COPY/AUTO EDID control via dialing the dip switch.
- Compact design for an easy and flexible installation.



SD-0102-4K60

1×2 HDMI 2.0 4K60 Splitter

Product Key Features:

- HDCP2.2 compliant
- Support video bandwidth 18 Gbps
- Video resolution is up to 4K2K@50/60Hz
- Support 3D, HDR, Dolby Vision function
- EDID management by the DIP switch settings
- Output resolution auto scaling
- Supports 3.5mm audio de-embedded
- No need to install the driver, plug and play



SD-0104-4K60

1×4 HDMI 2.0 4K60 Splitter

Product Key Features:

- HDCP2.2 compliant
- Support video bandwidth 18 Gbps
- Video resolution is up to 4K2K@50/60Hz
- Support 3D, HDR, Dolby Vision function
- EDID management by the DIP switch settings
- Output resolution auto scaling
- Supports 3.5mm audio de-embedded
- No need to install the driver, plug and play





KVM

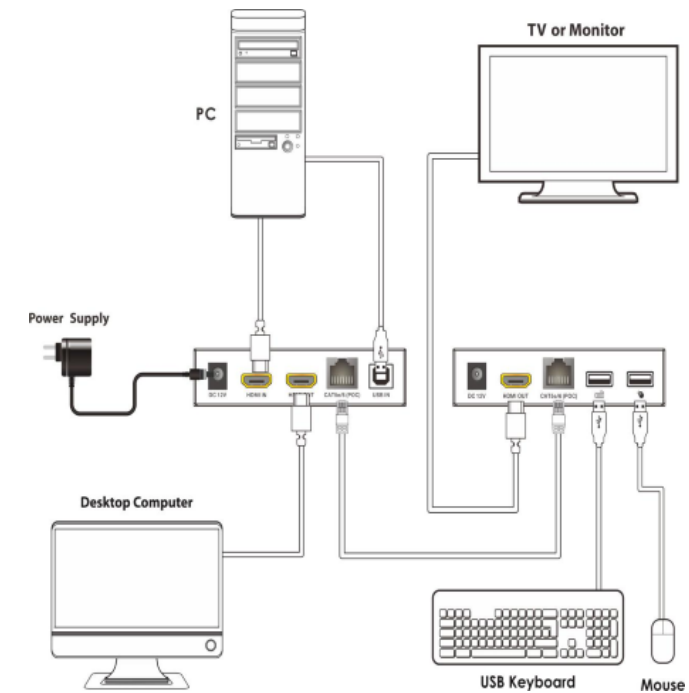
- KVM50HD HDMI/USB
- HBT100UB

KVM50HD

KVM Extenders

Product Key Features:

- HDMI 1.4b, HDCP 1.4 and DVI compliant.
- Video resolutions up to 1080p@60Hz.
- HDMI audio pass through
- Zero latency and uncompressed transmission technology.
- USB2.0 Full-speed transmission and routing.
- 12VPOC (Power over Cable) function supported.

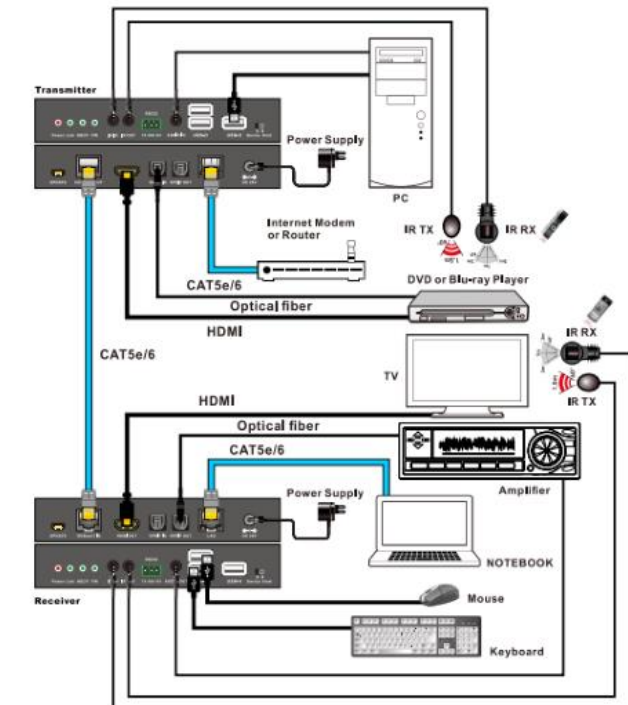


HBT100UB

KVM Extenders (4K)

Product Key Features:

- Fully compliant with HDMI 1.4, and compatible with HDMI 2.0 (4K2K@60Hz with YCbCr4:2:0).
- Supports HDBaseT 2.0 specification over a single CAT4e/6/7 cable up to 100m/328ft.
- Supports pass-through of HD audio formats: LPCM2/5.1/7.1 CH, Dolby Digital, DTS, Dolby TrueHD, DTS-HD (Master Audio)
- POE (Power over Ethernet) function supported.
- Full HD support: 1080p@60Hz@24/36/48bit/pixels.
- Supports USB 2.0 control.
- Supports external bi-directional SPDIF IN/OUT and available for multichannel audio.
- Transfers bi-directional Ethernet, RS232 and Infrared control signal together with the HDMI signal.





USB Extenders

- SD-USB50
- SD-USB100

USB Extenders

Product Key Features:

- Supports extend distance up to 50m/164ft or 100m/328ft Via CAT 5e/6 cable
- Support one USB-B port input on the transmitter
- Support two USB 2.0 ports output on the receiver
- Supports PoC function which means that either transmitter or receiver is powered (SD-USB100)



SD-USB50



SD-USB100





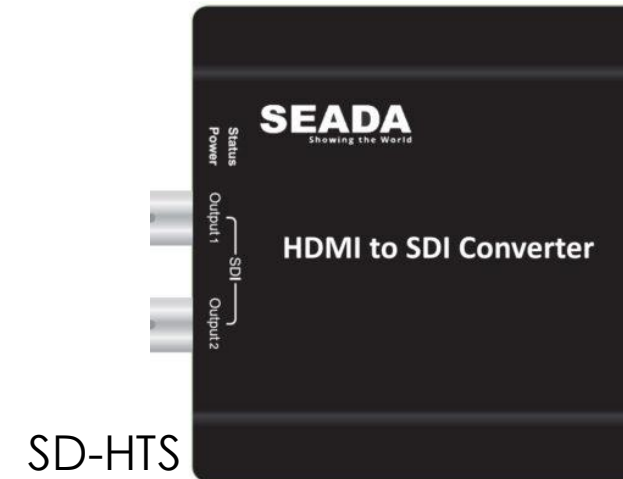
HDMI & SDI Converters

- SD-STH
- SD-HTS

HDMI/SDI Converters

Product Key Features:

- Convert SD/HD/3G-SDI to HDMI or convert HDMI to SD/HD/3G-SDI
- Distribute 1 SD/HD/3G-SDI to 1 HDMI plus 1 looping SDI output simultaneously
- Distributes 1 HDMI source to 2 SD/HD/3G-SDI output simultaneously
- Support SDI input resolutions:
1080p (50/60/59.94/30/29.97/24/23.98Hz)
1080i (60/59.94Hz), 720p (60/59.94/50Hz), 576i (50Hz), 480i (60/59.94Hz)
- Support HDMI input resolutions: 1080p (50/60/59.94/30/29.97/25/24/23.98Hz) 1080i (60/59.94/50Hz), 720p (60/59.94/50Hz), 480i (60/59.94Hz)
- Work with HDMI to SDI converter to cascade many layers
- Support transmission distance up to 100m over RG59 cable
- With mounting ears





Video Capture

- SD-HU
- SD-UHU

Video Capture and Record

Product Key Features:

- It is compatible with windows, Linux, and OS X operating systems.
- USB3.0, 300-350MB/s throughput and it is compatible with USB2.0.
- The capture of video and audio is all done by SD-HU and will not slow down the CPU.
- It can capture one single channel HD HDMI video signal.
- The input and output video signal can reach 1080p/60Hz.



Video Capture and Record

Product Key Features:

- Supports HDMI video input capture and HDMI loop output.
- Supports resolution 480i~1080p60Hz format video capture.
- Supports resolution 4K2K@60Hz (Down Scaler)->1080p60Hz video capture.
(Attention: 4K2K@50/60Hz 4:2:2 resolution not supported down scaler function.)
- HDMI input and HDMI loop output supports HDMI 2.0, HDCP 2.2, resolution the maximum up to 4K2K@60Hz (4:4:4).





Video
Wall
Screens

Video Wall Screens

Product Key Features:

- 49/55-inch LCD video wall displays
- Super narrow bezel (3.5mm)
- Daisy chain tiling
- 500cd/m² IPS panel
- 4K compatible video walls
- Low power consumption
- Multiple inputs
- Power timer
- Smart temperature control
- Wide viewing angle





Cables

- Active Optical:
 - SC-4K Series
 - SC-AVC Series
 - SC-DPH Series
 - SC-UMM Series
 - SC-UFM Series
- 4K Premium HDMI:
 - SCHM Series

Active Optical Cables

Product Key Features:

- HDMI, USB 3.0, Type C, DP to HDMI, USB F to M.
- Low power consumption, no external power supply needed.
- Thinner, lighter, and softer than the normal copper cable.
- Lengths ranging from 10m to 100m.
- Plug & Play no driver required.
- RF screening to prevent interference.



SC-DPH SERIES



SC-4K60 SERIES



SC-UFM SERIES



SC-UMM SERIES



SC-AVC SERIES

4K Premium HDMI Cables

Product Key Features:

- 26AWG cable wiring
- Support 18Gbps bandwidth
- Superior transfer rates, up to 18Gb/s @60Hz ideal 4K.
- Support all HDMI embedded audio formats.





SEADA DEMO ROOM

