

# G24-HDMI Quick Start Manual

## Note

1. Do not fix the device to any surface which is a heat source to avoid over heating
2. Do not cover the surface or ventilation grills of the device to avoid over heating

## 1. Verify the package contents

Please verify the package contents against the List Below

1. G24-HDMI Controller	x1	6. USB to RS232 Cable	x1
2. 12V/3A Power Adapter	x1	7. RS232 to Phoenix Cable	x1
3. Quick Start Manual	x1	8. 5-pin Phoenix Connector	X1
4. Network Cable	x1	9. 3-pin Phoenix Connector	X1
5. Mounting Ear	X2	10. Download Guide Card	X1

## 2. Set up the G24-HDMI

- I. Connect the power cable to the unit and power it up
- II. Connect the outputs to the screens of the video wall
- III. Connect all the video sources to the inputs of the devices

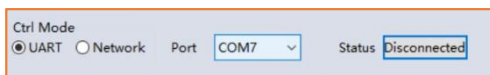
**Note:** G24H remembers the settings used on the device before powering off. The default setting for the new unit is **2x2** video wall with **input 1** across the 4 screens. All outputs are set at resolution of 1920 x 1080@60.

## 3. Run the software on control PC

Users can run the G24.exe software directly without installation. Software can be downloaded from the SEADA website (<https://seada.co.uk/downloads>). Double click the G24 software to get started.

## 4. Connect through Serial Port

Connect the G24-HDMI with a serial cable to the control PC (cable not included in the package)



If the software was connected via UART (RS232) last time, software will connect to the G24-HDMI automatically via RS232. If it was used at Network last time, a 'Network

Timeout' error message will be shown on screen and users need to set up as below for RS232 connection in the software

- Choose '**UART**' instead of '**Network**'
- Select the **COM port** from the **Port** dropdown menu
- Press '**Disconnected**' button to connect

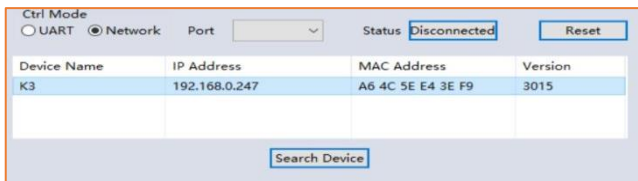
## 5. Connect through Network

The default IP address for G24-HDMI controller is **192.168.0.247**, Users need to change the IP address of the control PC to **static** IP address and the same network segment as the G24-HDMI at **TCP/IPv4** in **Ethernet Properties**

- IP address: any address between **192.168.0.2** and **192.168.0.254** except the address which has been taken by the G44-HDMI
- Subnet mask: **255.255.255.0**, Default Gateway: **192.168.0.1**

Connect the G24-HDMI with a CAT cable to the control PC (cable included in the package)

# G24-HDMI Quick Start Manual

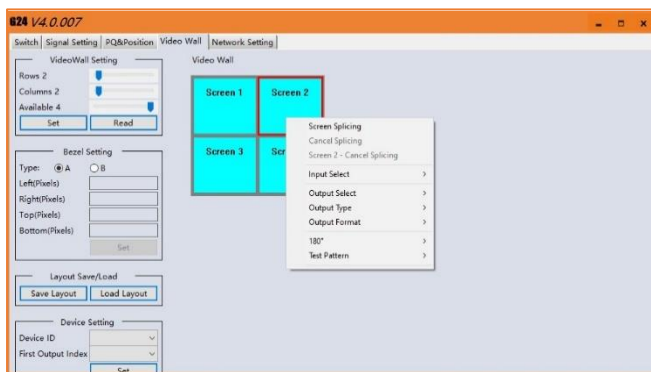


If the software was connected via Network last time, software will connect to the G24-HDMI automatically via network. If it was used at serial port last time, a 'Please select a COM port' error message will be shown on screen and users need to set up as below for Network connection

in software

- Choose '**Network**' instead of '**UART**'
- Press '**Search Device**' button to find the G44-HDMI on the network
- Highlight the device and press '**Disconnected**' button to connect

## 6. Set up the video wall



Once connected, G44H will load the settings used from last time. The default setting for the new unit out of package is 2x2 video wall with input 1 across the 4 screens. All outputs are set at resolution of 1920 x 1080@60.

Select the '**Video Wall**' tab and users can set up the video wall layout in '**Video Wall Setting**', Bezel correction in '**Bezel Setting**' and Save/Load preset video wall layouts in '**Layout Save/Load**'

Right click on the video wall, users can use the tools in '**Dropdown menu**' to set up the video walls.



- **Screen Splicing** - This combines the selected screens into one and displays the selected input across all the splicing screens. For example, in the setup 2x2, if all of them are spliced, then the input selected by the user will be displayed across all the 4 screens.
- **Cancel Splicing** – This will cancel the video wall and revert to the matrix switching mode
- **Screen – Cancel Splicing**– This will cancel the selected single screen and revert only that screen to the matrix switching mode to form a Picture in Picture effect

- **Input Select** –This allows the user to control which input is displayed on video wall
- **Output Select** – The user can control which screen should be mapped to which output (only available in matrix mode)
- **Output Type** – Allows the user to adjust the type of the output (only available in matrix mode)
- **Output Format** – Controls the resolution of the output (only available in matrix mode)
- **180°** – Rotate the selected screen 180°
- **Test Pattern** – To display Color Bar pattern on the screen

This quick start manual provides basic instructions for setting up SEADA G24-HDMI video wall controllers. For additional information about how to use the controllers, please refer to the G24-HDMI User Guide (SD-EN-021), which can be downloaded from the SEADA website (<https://seada.co.uk/downloads>).